

MARKET REPORT

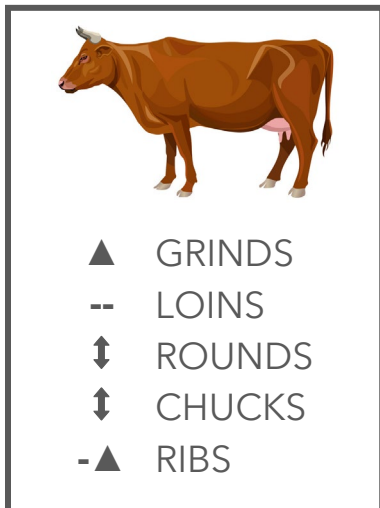
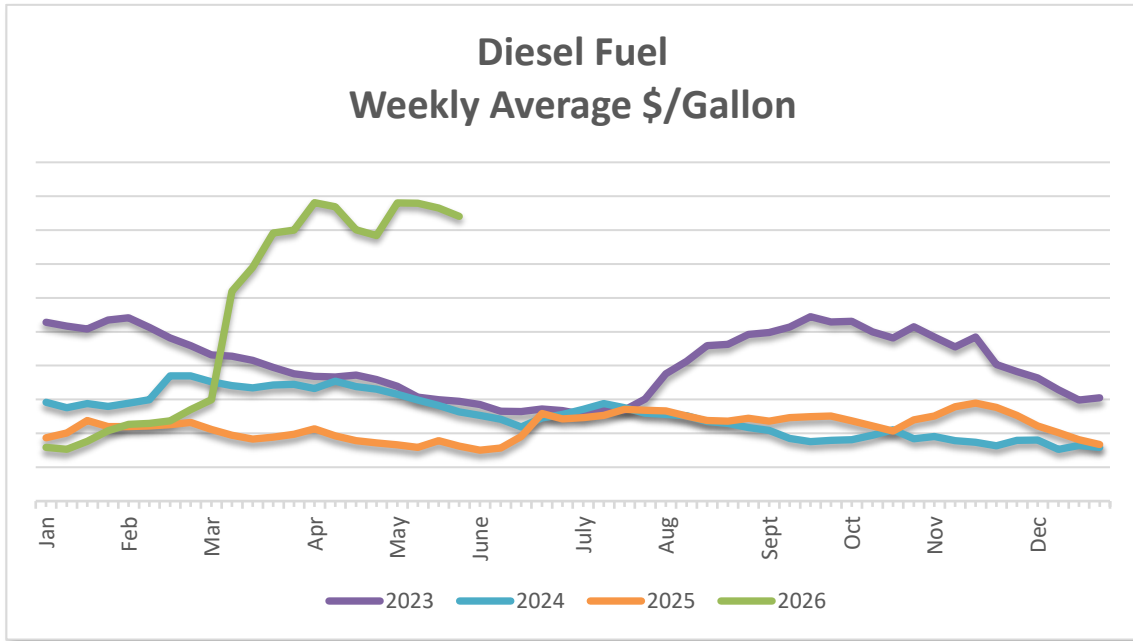


WEEK ENDING | MAY 29, 2026

Graphs represent data for the week ending May 22, 2026



LOGISTICS



BEEF

The market is steady to weak. With availability in secondary market. Total beef production last week was down by 1.4% versus the prior week and down 2.6% compared to the same week last year. Cumulative meat production for the year-to-date was down 3.2% compared to the previous year. The total headcount for last week was 528,000 compared to 535,000 for the same week last year. Year to date, the total headcount is 10.7 million head, which is down 9.2% from last year. Live weights for last week were up 1 lb. versus the prior week and are up 46 lbs. from the same week last year.

Live cattle futures for June and August were higher. May and August feeder cattle futures were sharply higher. With slaughter numbers reduced by about 9.2% this year, reduced beef supply is setting the tone for the industry.

The carcass cutout values continue to show ups and downs even with a holiday. Late week showed higher volumes being traded lower as looking to clear through inventory before the holiday. Supplies seem adequate with limited and varied fill-ins needed after the weekend. Some rib and loin action, heavier on grinds at somewhat higher levels. Demand is moderate at higher seasonal prices. There is still a variety of product availability across packers on the spot market

as well as secondary. Trades are mixed with packers moving in opposite directions on the same cuts. Most product currently trading at volume is trading lower. Flank is still in tight supply while increased availability on flap. Ball tips for some packers are moving closer to top butt ranges giving support. Chuck flap has gained interest at lower levels giving some relief to loin flap. Buying interest on end cuts is mostly steady with mixed support on fill-in orders. Insides, clods, are moving in opposite directions with varied suppliers based on their immediate availability. Some thin meat action moved over to chuck options as the levels climbed. Abundance of rolls available. This can lead to extreme bounces. Prime grade out availability setting records. Beef is fighting for ad space with lower priced proteins.

Grinds – The market is firmer. Due to a lack of inventory, fill-in business and competing value proteins for grilling is supporting higher demand/prices. Import markets of 50's and 90's continue to be very unsettled. High costs on steak cuts will support more grind ad space to compete against other proteins. Mid-week trade levels on both 73% and 81% grinds were posted higher than the prior week in average volume.

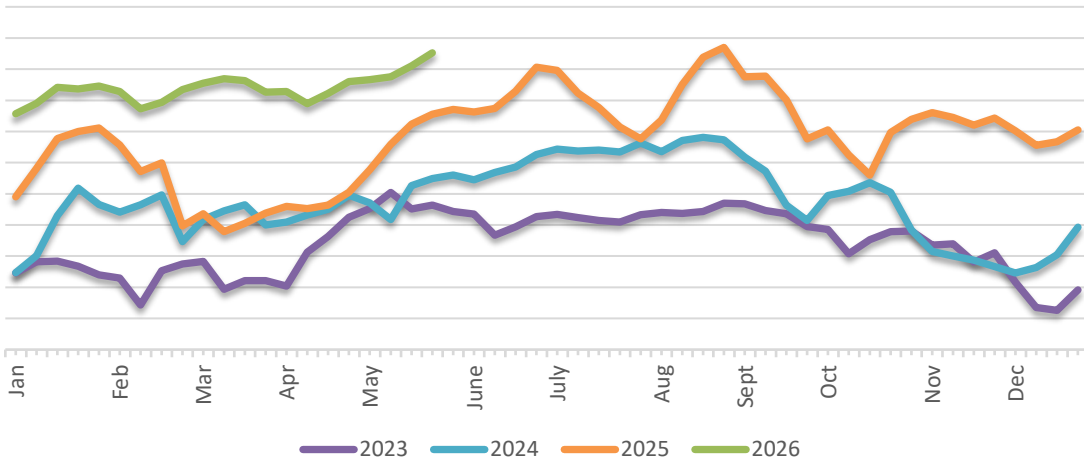
Loins – The market is steady. Demand is moderate. Short loins gained some support for the holiday weekend and fill-in after. High price levels on top sirloins (short loins, strips, top butts) supported bottom sirloins (flap, tris, ball tips), as the levels get closer together may see movement shift. A few forward trades are appearing at a lower cost. Top butts have picked up volume at steady levels. Thin meats have shown some lower trades on inner skirts and flap. Some packers have availability on ball tips at lower money while others have limited availability. Flanks are still in tight supply and a supported market. Market levels on loins have soft undertones with potential.

Rounds – The market is mostly steady. Grinding options are giving some support. The market on insides has seen some lower trades, but denuded has been higher. Peeled knuckles are steady with flats/eyes lower. Various packers moving in opposite directions with their immediate availability. Rounds are bouncing up and down within a narrow range.

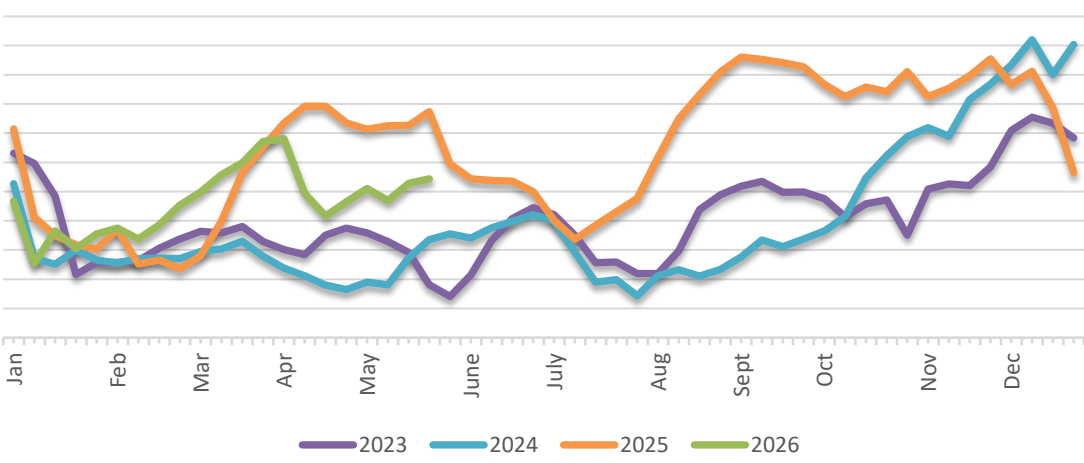
Chucks – The market is steady on clods, rolls available to move. Added interest in chuck flap and tenders. Some fill-in business is providing some lift for some packers while other suppliers are asking lower. Availability varies by packer. Grind production will support chucks with varied trim availability. Lower volume on briskets being traded at somewhat higher levels with significant smoking business covered before the holiday.

Ribs – The market is steady to higher on early week fill-in. Retail and foodservice demand has had a few spikes. Lack of feature activity is keeping a lid on weekly volume. Supply varies by packer and individual plant. Values have been up and down on the spot market. There are significant ranges between packers' offers. Price points for some packers are below prior years. The market is holding and ribs are higher than the 3-year average.

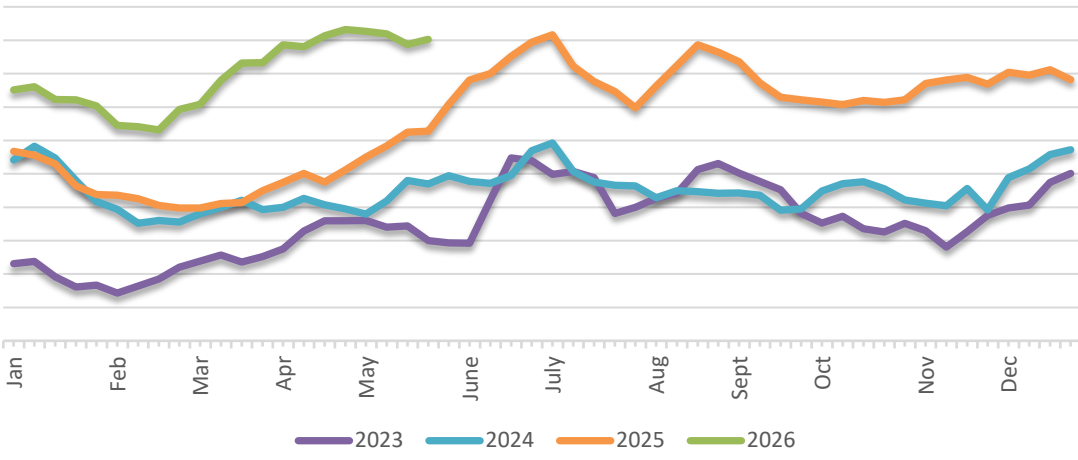
Ground Beef Weekly Average \$/lb



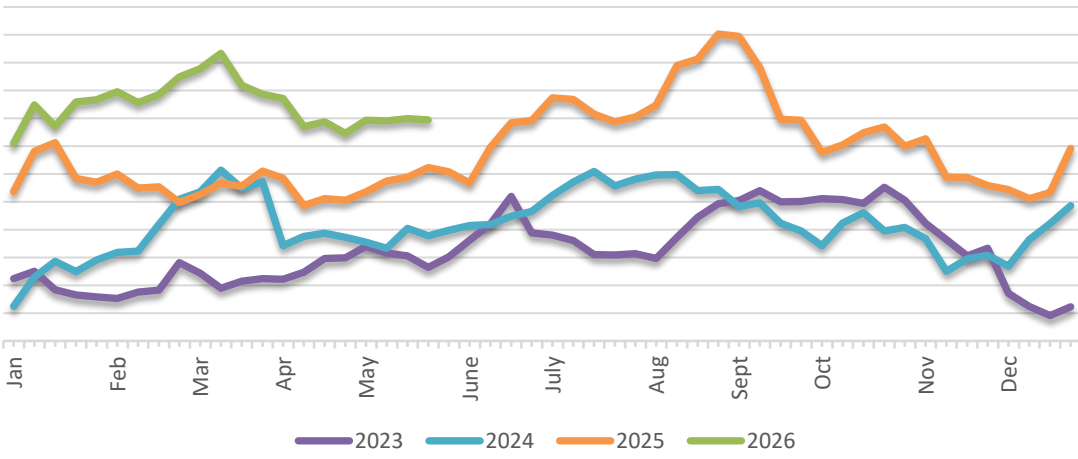
Choice Ribeye Heavy Weekly Average \$/lb

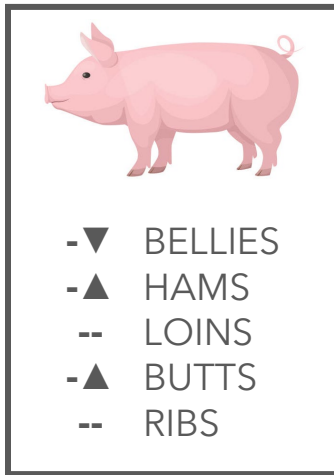


Choice Brisket Weekly Average \$/lb



Choice Inside Weekly Average \$/lb





PORK

The market is steady. Total pork production for last week was down 1.5% versus the prior week and up 0.2% compared to the same week last year. The total headcount for last week was 2,321,000, compared to 2,356,000 for the same week last year. Live weights for last week were up 1 lb. compared to the prior week and up 5 lbs. compared to the same week last year. Lean hog futures showed some strength over the last week with values for June and July rising slightly. Demand improved in late May due to Memorial Day features and consumer grilling. Carcass cutout values have firmed up recently, but the trend line is flat on a week-to-week basis. In the fresh meat complex, demand for loins, butts, hams, and ribs remains steady enough to keep up with adequate weekly supply. Supply was strong in Q1 with plants running full harvest, but Q2 slaughter has slowed down just a bit. Market values across most categories are trading firm on bone-in product and mixed on boneless product.

Bellies – The market is steady to weaker. Overall demand from the retail, QSR, and foodservice channels has been moderate in May. Supply numbers have improved as cold storage numbers are up by about 4.5%. The market has been inching lower over the last month.

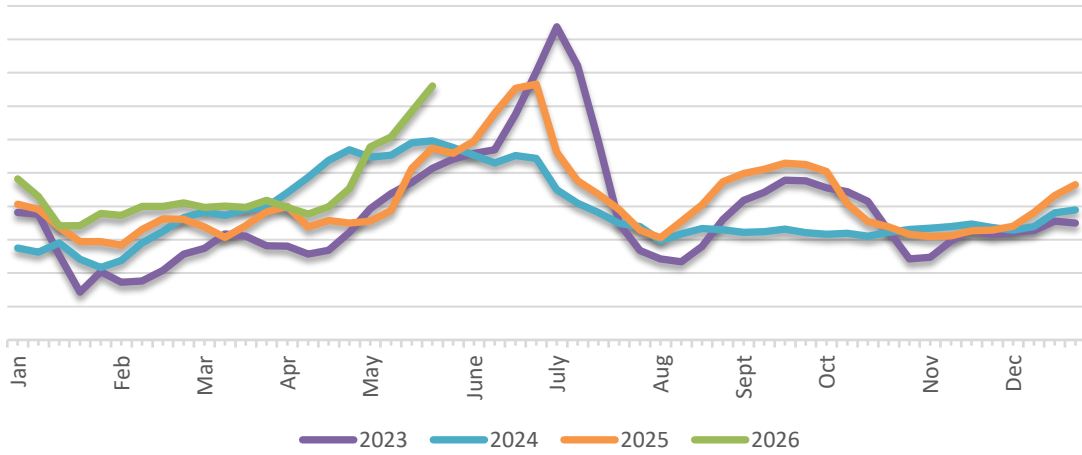
Hams – The market is steady to firmer. Export demand for bone-in hams got an uptick from Mexican imports and peso appreciation. Demand for boneless hams has been static with average movement from the deli and foodservice channels. Supply is available. Market levels have moved slightly higher over the last couple of weeks.

Loins – The market is steady. Retail demand for bone-in loins is moderate due to retail feature business and tighter supplies. Demand for boneless is unsettled due to spot loads of strap-on loins being offered in the marketplace. Supply varies by packer. The market is trading on the lower end of the range.

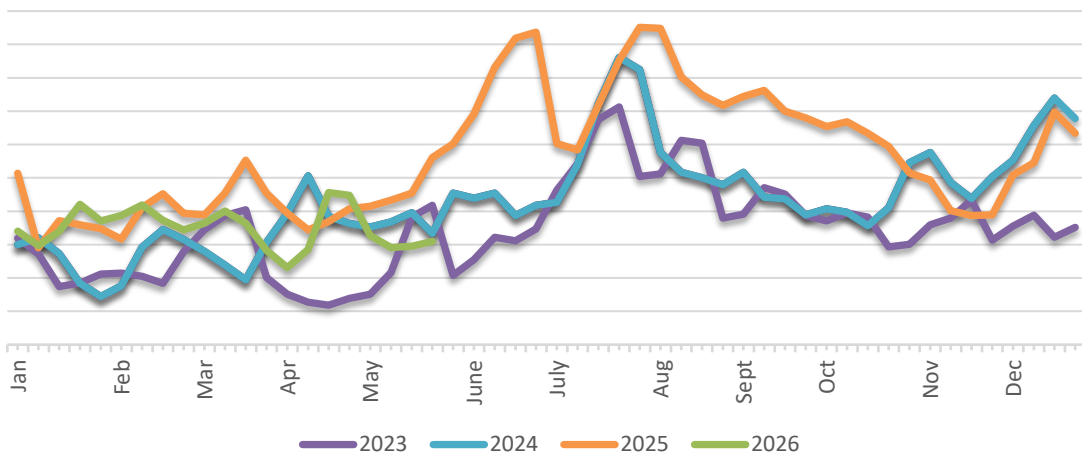
Butts – The market is steady to firmer. Retail demand on bone-in has been robust with grilling season and retail holiday ads. Boneless butt demand got an uptick with foodservice volume and spot business. Export demand to Mexico and the Pacific Rim is fair. Supply is available. Market levels are trading on the higher end of the range.

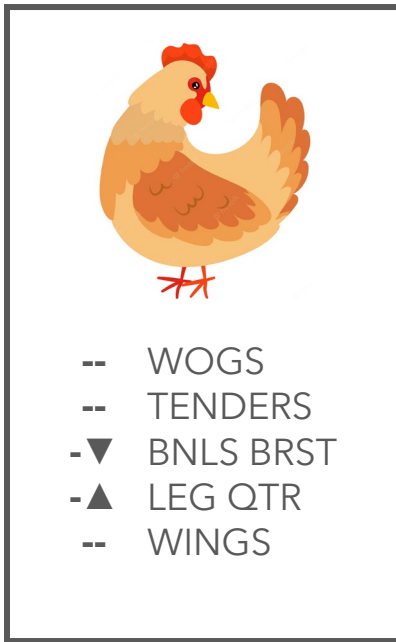
Ribs – The market is steady. Retail and foodservice demand continues to rise as seasonal business is setting in. Distributive buying interest is robust in support of the upcoming July 4th Holiday. Supply is available but limited. The market on spareribs, St. Louis ribs, and back ribs is trading within the established range.

Pork Butt 1/4 Trim Bone-In Weekly Average FOB



20-23 Ham Market Weekly Average \$/lb





CHICKEN

The market is steady to weaker. The total headcount for the week ending 5/23/2026 was 174,103,000, as compared to 172,843,000 for the same week last year. The average weight for last week was 6.54 lbs. as compared to 6.61 lbs. for the same week last year. Demand from the retail and foodservice channels was moderate over the holiday weekend. In addition, the rainy week across the East Coast contributed to slow demand. Further processing has also slowed down a bit, which is backing up supply. Front half categories like boneless breast and wings continue to trade behind the market. Movement on back-half parts and dark meat has shown some vibrance recently. Export business on leg quarters and whole legs remains static and is consistent on a weekly basis. Higher slaughter numbers YOY continue to add more finished pounds to the marketplace. Market levels on breast meat and wings continue to be pressured lower while dark meat values are holding firm.

WOGS – The market is steady. Demand from retail deli and fast food is meeting normal springtime expectations. Supply is tight on the premium sizes. Market levels on small sizes remain a full-steady.

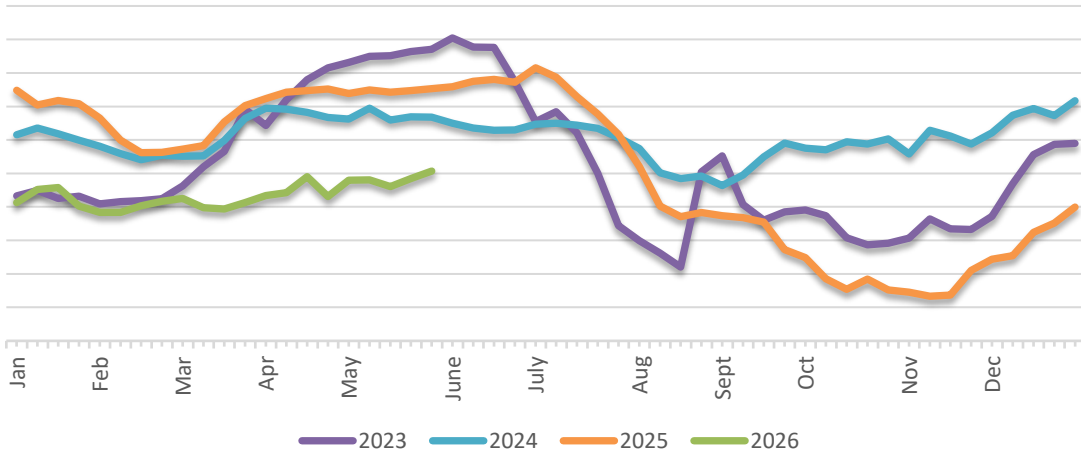
Tenders – The market is steady. Demand from the foodservice and QSR channels picked up last week which put supply and demand in better balance. Custom portioning on jumbo tenders improved to support the foodservice channel. Supply is available. The market on medium and jumbo tenders is holding even.

Boneless Breast – The market is steady to weaker. Retail demand for case-ready boneless breast and foodservice demand for jumbo CVP breast meat continues slower than expected. With sluggish demand, supply is in excess on the larger sizes. The market has been moving lower on medium and jumbo sizes.

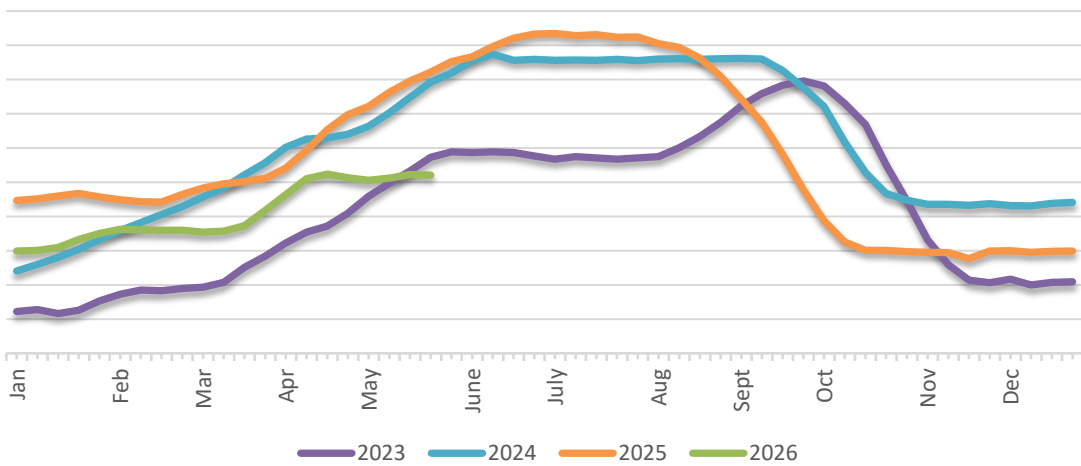
Leg Quarters and Thighs – The market is steady to firmer. Retail demand for drums and thighs has picked up. Demand for whole legs has picked up with de-bone operations being the key driver. Export business on whole legs and leg quarters remains steady. Supply varies by plant. The market on boneless dark meat has been on the rise.

Wings – The market is steady. Demand in the foodservice channel has stalled over the last month. Further processors are keeping a tight watch on inventories. Supply is in excess on jumbo wings. Spot trading is being done at values behind the market.

Chicken Plant Grade, 2.5 lbs & Up Weekly Average \$/lb



Chicken Tenders Weekly Average \$/lb





TURKEY

The market is steady to weaker. The total headcount for the week ending 5/23/2026 was 3,538,000, as compared to 3,337,000 for the same week last year. The average weight for last week was 33.07 lbs. as compared to 32.60 lbs. for the same week last year. Retail and foodservice volume is consistent, mostly unchanged, and trending sideways. Whole birds continue to be highly sought after in combination with limited offerings. Demand for breast meat remains active but the market has been correcting lower on a weekly basis. Drums and wings traded behind the market on spot offerings from various plants. Future supply remains a concern if HPAI outbreaks occur over the summer. Tight supply continues to be an issue due to the number of plants that went off-line or

were sold over the last year. Asking prices are being tested lower on boneless breast meat, drums, and wings. Market levels across most categories are on the lower end of the range.

Whole Birds – The market is steady to firmer. Very few spot transactions have been reported this month. Suppliers have been reluctant to offer out price quotes until they are more comfortable with product availability. Recent low volume purchases have been reported at higher prices, which is supporting the market trendline.

Breast Meat – The market is steady to weaker. Domestic demand from the retail, foodservice, and QSR channels is flat. Fresh and frozen supply is tight with limited offerings. Very limited spot buying has been pressuring the market levels lower.

Wings – The market is steady to weaker. Demand on whole wings is sluggish while volume on two-joint wings is moderate for this time of year. Supply varies by plant and spot availability. The market on Tom wings has been soft on limited trading.

Drums and Thigh Meat – The market is steady to weaker. Export demand for drums has slowed a bit and ground turkey sales have become sluggish in the retail channel. Supply varies by plant. The market on drums has been trending lower.



SEAFOOD

White Shrimp – The market is steady. Supplies remain broadly balanced, while pricing activity increasingly reflects inventory rotation in response to evolving supply conditions rather than any weakening in underlying demand.

Black Tiger Shrimp – The market is steady. Supplies remain broadly balanced, while pricing activity increasingly reflects inventory rotation in response to evolving supply conditions rather than any weakening in underlying demand.

Gulf Shrimp – The market is firmer. The Gulf Wild Shrimp market remains firm with limited supplies balanced by restrained demand.

King Crab – The market is weaker. The Norwegian king crab market is steady to weaker.

Snow Crab – The market is weaker. Supplies are adequate with moderate demand. The continued weakness reflects persistent competitive pressure from increasing Canadian supply in the marketplace.

Warm Water Lobster Tails – The market is firmer. Limited availability of Brazil-origin tails continues to steer buyers toward Caribbean product. Demand is moderate with barely adequate to adequate supply.

North American Lobster Tails – The market is steady to weaker. Demand remains quiet with moderate supply.

Salmon – The market is mixed. Farmed salmon is mixed with pricing influenced by sellers' supply positions. The West Coast whole fish market is weaker. Supplies are adequate to barely adequate with fair demand. The Norwegian and Scott whole fish markets are weaker. Supplies are fully adequate with moderate to fair demand. The Chilean whole fish market is weaker. Supplies are barely adequate.

Cod – The market is firmer. There is a steady to firm undertone in the market. Demand is moderate, while supplies have tightened.

Flounder – The market is steady and mostly unchanged.

Haddock – The market is firmer. There is a steady to firm undertone in the market. Demand is moderate, while supplies have tightened.

Pollock – The market is firmer. Supplies are adequate with moderate demand.

Domestic Catfish – The market is steady. Supplies are currently meeting market demand.

Tilapia – The market is unsettled. There are reports of slow demand, which has the potential to create long inventory positions.

Swai – The market is steady to firmer.

Scallops – The market is steady to firmer. Supply is barely adequate, particularly for large sizes. Demand remains lackluster. However, there is a firmer undertone in the market.



FLUID MILK

The market is strong. Farm level milk outputs vary by region. Outputs in some southern states and California are experiencing steady declines while Northern and Central milk volume outputs. In the East, milk utilization is increasing and keeping pace with strong outputs. In the Northern states, spring flush is still ongoing, while southern states are winding down the spring flush, though production is steady. In the Central region, milk outputs are strong. Contacts note outputs are up year over year. Cream production in the region is strong. Cheesemakers note they are running full production schedules. In the Southwest, some butter makers note they are securing cream from the West to keep churns active. Butter production is steady. In California, milk productions vary from steady to lighter. Stakeholders note warmer temperatures are reducing cow comfort in certain areas. Manufacturers in the region note milk intakes are above expectations. In the Pacific Northwest, milk production is steady and stakeholders note milk volumes are somewhat tight. Cream availability in the region is meeting buyer needs.

Class I demand is steady to light. Bottling operations are expected to lighten as educational institutions have started or are soon to begin summer break. Class II demand is steady to strong. Manufacturers are purchasing spot loads of cream to bolster ice cream production. Class III production is steady. Class III spot milk is available. Class IV demand is steady to strong. Production of powdered milk is very active as nonfat dry milk and buttermilk powder have high demand. Butter makers note few spot purchases of cream as contracted volumes are sufficient for current production schedules. Most churns are still operating seven days a week. Condensed skim demand is strong.

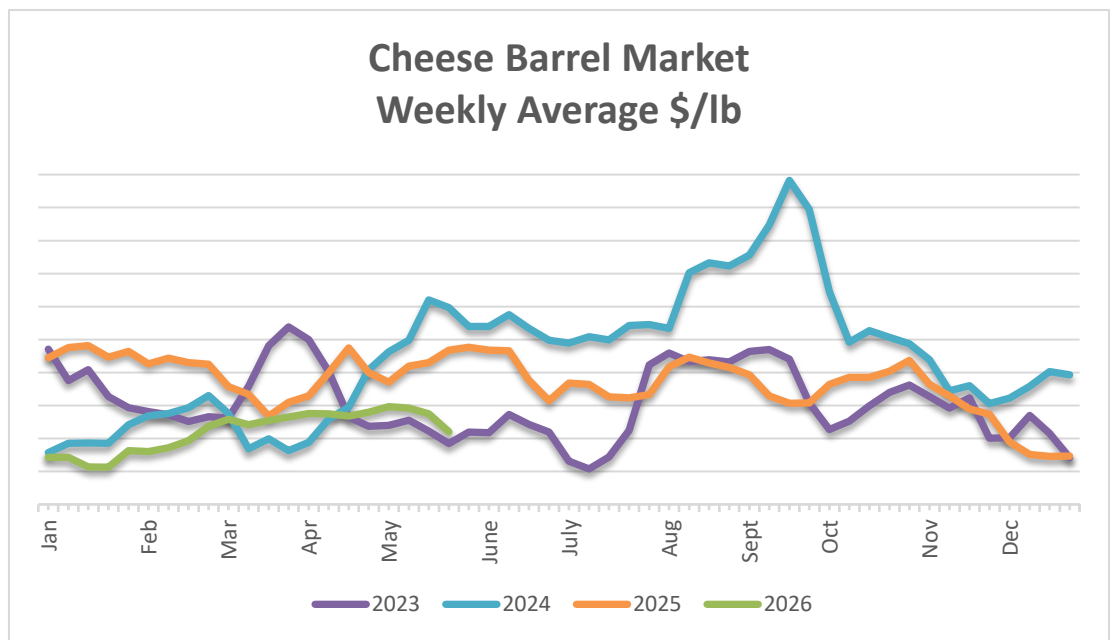
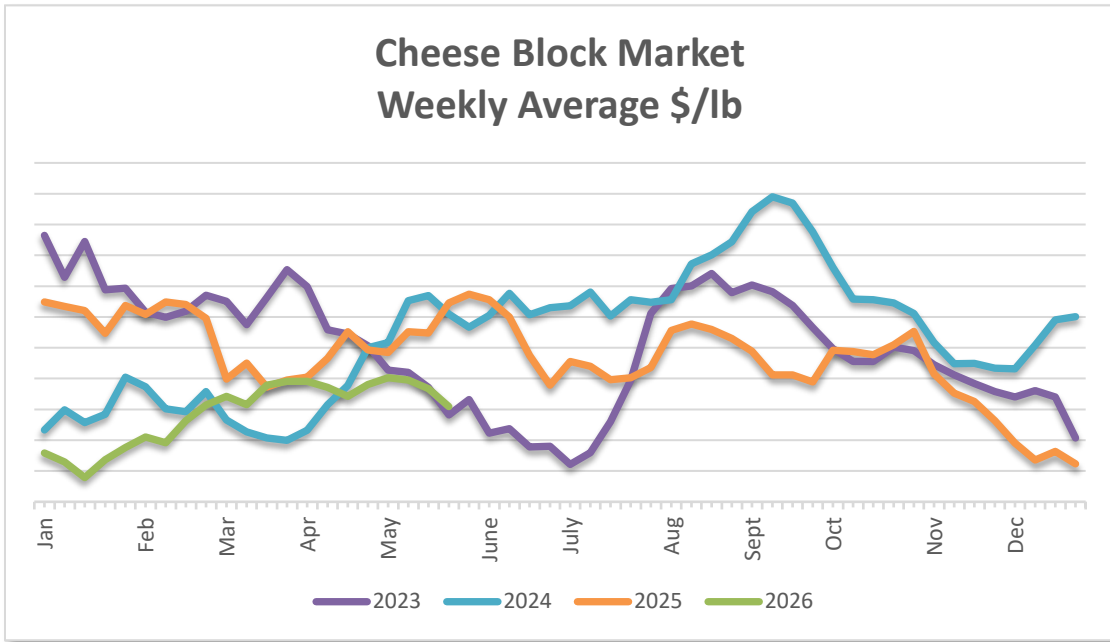


CHEESE

The market is mixed. The CME Block market was mixed as the week progressed. The CME Barrel market trended weaker as the week progressed. Both markets trended weaker than the prior week. In the Northeast, milk production remains strong. Cheesemakers in the region are capitalizing on higher milk volumes to keep production schedules busy. In the Central region, milk production is steady. Cheesemakers in the region are running full production schedules. In the West, milk intakes are meeting expectations. In some areas, plant managers note milk volumes are tight. Cheese production schedules vary from steady to lighter. Retail demand is lighter than prior weeks. Bulk cheese demand is steady to strong. Domestic cheese demand is strengthening as retailers and foodservice providers prepare for the summer. Export demand varies from steady to strong. Contacts note that there is more export demand than product available. Loads produced in the U.S. are being sold for less than loads produce in Europe, though the price difference is narrowing.

In Europe, milk production is stable and at peak spring volumes. European cheese production schedules are stable and working through high milk intakes. Manufacturers continue to note supply and demand is balanced. Spot load availability is mixed. Demand for foreign type cheese from both the retail and foodservice sectors is steady. As temperatures continue to warm, sellers note sales are increasing. Stakeholders note demand from buyers in southern Europe are

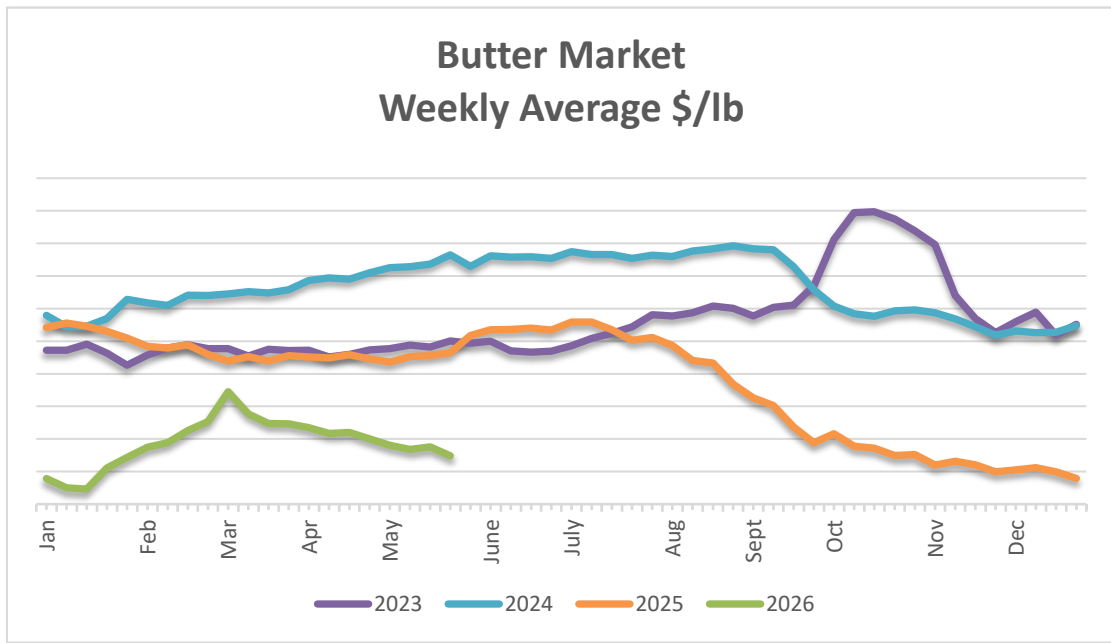
meeting or exceeding expectations. Export demand varies from steady to strong. According to the USDA's most recent report, stakeholders indicate tighter shipping space, port space, and increasing insurance prices are making transportation more challenging.





BUTTER

The market is firmer. The butter market moved firmer as the week progressed and trended firmer than the prior week. In the Northeast, year-over-year butter production is stable. Manufacturers are operating churns seven days a week. Cream volumes are seasonally high. In the Central region, milk output is unchanged. Cream production in the region is strong. Butter makers in the southwest note they are buying spot cream to keep churns active. Spot loads of 80% butterfat butter are available though contacts note 82% butterfat inventories are tight. In the West, milk outputs are providing plenty of cream to meet the needs of manufacturers. Spot cream demand is mixed. Butter makers are working to build inventories ahead of the summer months. Retail sales are stable. Foodservice demand is down from last year. Inventory levels are balanced. Domestic demand for butter is steady. According to the USDA's most recent report, stakeholders note space in shipping lanes and at ports is tighter, thus presenting logistical challenges from international trading. Export demand varies from steady to stronger.

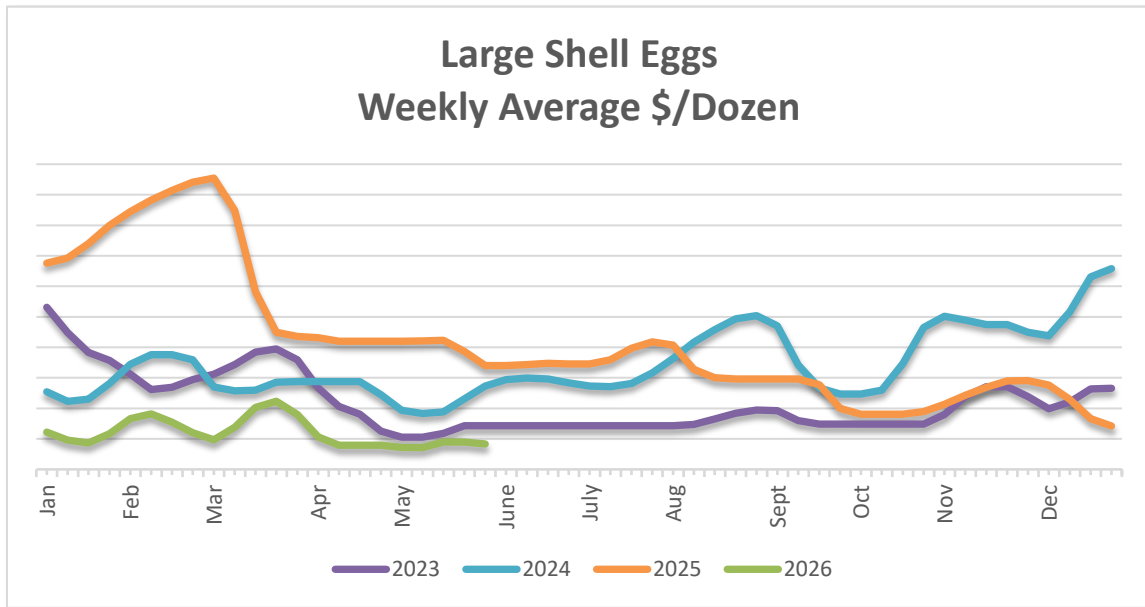


EGGS

The market is steady. Retail demand is moderate to good due to lower shelf prices and retail features. Foodservice demand is moderate with early summer travel. QSR business has improved and is getting back to consistent volume levels. Institutional demand is trending lower as school lets out for the summer. Distributive buyers supporting school districts are taking a measured approach. Export business from Mexico and the Pacific Rim is status quo. Supply has been affected by seasonal flock rotations and is available across most sizes.

Market levels are flat on medium sizes and moved lower on large sizes. National weekly reports show shell egg inventory up 4.1% and breaking stock inventory up 4.0% over last week.

Demand in the egg products category is moderate with a quiet tone. Even with adequate demand, the category is being challenged with the weak conditions stemming from the shell egg market. Some oversupply on liquid whole egg has been reported. Spot offers on liquid whites and yolks are being shown to the marketplace. Market level on liquid whole egg was pressured lower while whites and yolks have been trading in the middle of end of the range.



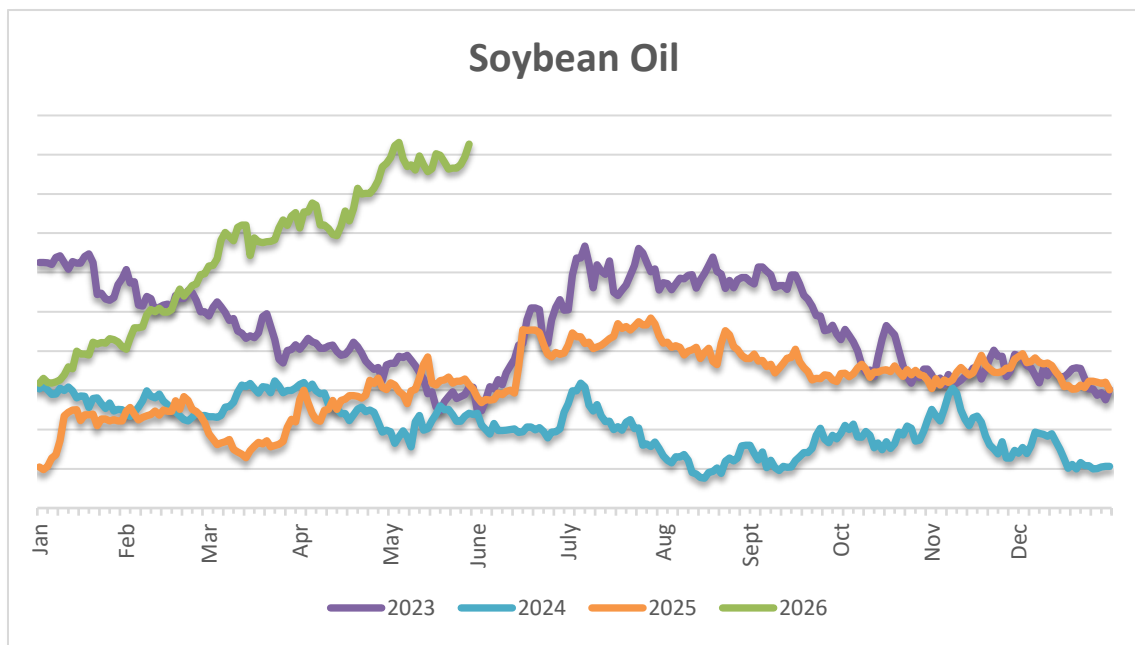
OIL

Soy Oil – The market is mixed. The soybean oil markets soybean oil markets traded in a mixed, rangebound pattern as competing bullish and bearish forces kept direction limited. Support came from persistent biofuel demand expectations and strong U.S. crush margins, which continued to anchor longer-term consumption outlooks. However, near-term demand signals weakened, with softer physical buying from food and oleochemical sectors limiting upside momentum. Macro influences also played a role, as easing crude oil markets tied to improving geopolitical sentiment reduced immediate biodiesel-related support, though intermittent tensions capped downside pressure. Reports indicate steady U.S. planting progress and ample global supplies reinforces a cautious tone. Soybean oil markets remained balanced, consolidating as participants weighed strong structural demand against softer short-term consumption signals.

Canola Oil – The market is firm. The Canola oil market traded with a firm but volatile tone, supported by a mix of tightening domestic dynamics and external influences. Strong Canadian crush demand and steady export movement, particularly toward China and the EU, helped underpin baseline consumption. At the same time, geopolitical uncertainty remained elevated,

with renewed tensions in the Middle East supporting energy markets and indirectly bolstering biofuel-linked demand for canola oil. Supply-side developments added complexity, as delayed Prairie seeding raised short-term production concerns, although progress continued. Government data pointing to larger future carryout levels tempered bullish sentiment.

Palm Oil – The market is mixed to Firm. The Palm oil market traded in a mixed to firm range as supportive supply concerns offset softer near-term demand. Strength in energy markets helped stabilize biodiesel-linked demand expectations, providing underlying support across the vegetable oil complex. However, export activity remained uneven, with subdued buying interest from key importers, particularly India, limiting stronger upside momentum. Supply side concerns grew around tightening availability due to Indonesia’s export policy management and continued focus on domestic biodiesel mandates. At the same time, seasonally increasing production in Malaysia began to cap more aggressive gains.



COCOA

The cocoa market is weaker. Signs of weak chocolate demand are undercutting cocoa process. Tariff impacts as well as geopolitical issues worldwide are contributing factors in the cocoa market.

COCONUT

The coconut market is firmer. Coconut oil pricing remains expensive due in part to increasing costs by producers for coconut oil. Tariff impacts as well as geopolitical issues worldwide are contributing factors in the coconut markets.

HONEY

The honey market is mixed. Consumer demand for honey remains strong across retail and foodservice channels. According to the USDA, U.S. honey production was down 14% in 2025, driven by lower hive count and yield per colony. Two U.S. Congressional Representatives have proposed the China Trade Cheating Restitution Act, which would allocate collected anti-dumping duties to U.S. beekeepers instead of the US government. The Minimum Export Price for honey from India has been extended through the end of 2026. Tariffs, geopolitical events, and regulatory actions are driving volatility across the global honey markets.

IMPORTED TUNA

Skipjack – The market on Skipjack is firm. Rising diesel fuel costs and oil prices are influencing the market as rising operating costs destabilize pricing models. Ecuadorian skipjack fishing industry has warned of potential shutdowns as diesel fuel pricing has significantly increased operational expenses and adding further pressures to the export sectors.

Yellowfin – The market on Yellowfin is mixed. Yellowfin often reacts to the Skipjack market, and forecasts are softer. Sales have been trending down lately, and packers may have some carryover stock coming to the market.

Tongol – The market on Tongol is firm. Tongol catches remain low due to the off season. Thailand is expecting to resume fishing in mid-June. Rising diesel fuel costs and oil prices are influencing decisions as to when to resume as the uncertainty may push the start to early July.

Albacore – The market on Albacore is firm on long line caught Albacore as the raw material shortage persists.

MANDARIN ORANGES

China's 2026 Mandarin Orange harvest is now in progress, and early reports point to a healthy, promising crop. Production of mandarins and tangerines is forecast at approximately 27 million metric tons, maintaining China's position as the world's largest producer. Southern provinces such as Guangxi, Guangdong, Fujian, and Sichuan remain the core growing regions, while improved varieties and advanced cultivation practices continue to enhance fruit quality and export suitability. Domestic Consumption remains strong, driven by health-conscious consumers, while exports are projected to rise slightly on improved quality and expanded regional market access.

RICE

The U.S. rice outlook for 2026/27 projects lower supplies, exports, domestic use, and ending stocks compared with 2025/26. All rice production is projected at 175.2 million cwt, down 15% from last year, based on reported lower harvested area. The projected all rice yield is 7,732 pounds per acre, up 188 pounds from 2025/26. Total rice supplies are 275.3 million cwt, down 10% from last year on lower production. Total domestic and residual use is projected at 154.0 million cwt on reduced supplies. Total exports are projected at 79.0 million cwt, down 2.0 million cwt from the revised exports for 2025/26, on continued strong global competition and higher U.S. long-grain prices. All rice ending stocks are projected at 42.3 million cwt, down 18% from last year.

The global rice outlook for 2026/27 is for larger supplies, greater trade, increased consumption, and lower ending stocks YOY. World rice production is forecasting down 5.0 million tons to 537.8 million tons, the first decrease since 2015/16. The largest production declines are for India, Burma, and the United States. Global consumption is projected at 3.8 million tons higher to a record 541.4 million, on higher use by several countries. India's use is forecast 4.0 million tons higher at a record 128.0 million on population growth and continued distributions from the government's Public Distribution System. Conversely, China's use is forecast 2.1 million tons lower to 145.1 million on a declining population and changing consumer preferences.

SUGAR

Domestic Cane Sugar – Cane sugar production for 2026/27 is projected at 4.088 million short tons, raw value (STRV), a 130,000-STRV reduction from 2025/26. The winter freeze in Florida affected sugarcane planted earlier in the fall for harvest in 2026/27 with a loss of 75 days of growth in those areas. The aggregate effect on yield is uncertain but is projected to be at only 41.75 tons/acre. Processors will weigh in with their forecast next month. Louisiana production is projected at 2.146 million STRV with a 5,000-acre expansion but a lower yield than the record for crop year 2025/26.

Domestic Beet Sugar – Beet sugar production for 2026/27 is projected at 4.722 million short tons, raw value (STRV). Reported national planted area is 1.063 million acres. Applying a 10-year average of harvested-planted ratios for sugar beet-producing states yields a harvested area of 1.039 million acres, the lowest level since 2019/20. Less than ideal planting progress that extended into early May, revised sugar beet yields at 30.21 tons/acre at the national level, the lowest projected since 2022/23. Beet pile shrink is forecast at 7.063 %, a 10-year average, and projected recovery from sliced beets is 14.79 %, also a 10-year average.

Overall Domestic sugar production for 2025/26 is forecasted to decrease 28,582 STRV to 9.239 STRV. Florida processors report a gain of 10,900 STRV over last month as the harvest is very close to being over. Beet sugar is down 39,500 STRV on estimated declines in sugar recovery in the final periods of beet slicing. High-tier raw sugar imports are increased 141,317 STRV and imports from other sources are unchanged. Actual raw imports have increased 41,317 STRV since last month and sources indicate that about 100,000 STRV are likely to enter during the remainder of this fiscal year.

Mexican sugar – Mexican sugar production for 2026/27 is based on FAS Mexico City Post forecasts. Sugar production for 2026/27 is projected at 5.142 metric tons (MT). While seasonal rains during mid-2025 eased the drought conditions experienced during the prior two marketing years, recovery is likely to face constraints from recent rises in global fertilizer prices and other input costs. Area harvested in 2026/27 is projected at 738,000 hectares; cane sugar is forecasted at 48.25 million MT with a field yield of 65.4 MT/ha. Sugar consumption is forecast to decrease by 2% due to tax increases.

WHEAT

The wheat market is steady. According to the May WASDE report, the outlook for 2026/27 U.S. wheat is for reduced supplies and exports, lower domestic use, and smaller stocks. Wheat supplies are forecast to be down from last year with reduced production more than offsetting larger beginning stocks. All wheat production is projected downward on reduced harvested area and yield from last year. According to the USDA, the first survey-based production forecast for 2026/27 winter wheat is down 25% from last year primarily on sharply reduced Hard Red Winter production. Domestic use in the U.S. is lower on reduced feed and residual use reflecting smaller supplies while food use is unchanged from 2025/26. Exports are projected to be reduced on exported supplies and higher U.S. prices. The global outlook for 2026/27 is for lower supplies, marginally lower consumption, reduced trade, and decreased ending stocks in comparison to 2025/26 results. Global production is forecasted downward due to lower production from all major wheat exporting countries. The largest reductions are coming from the United States, the EU, Argentina, and Australia. Projected 2026/27 world consumption is lowered on less feed and residual use and due to reduced production for most of the leading global wheat producers. World food, seed, and industrial use is higher with India having the largest increase on continued population growth and ample domestic wheat supplies used in the government's Public Distribution System. Russia remains the largest exporter followed by the EU, Canada, Australia, and the United States.

For questions regarding the markets, please contact the appropriate Category Manager:

Davy Ard, Sr. Vice President of Category Management, ext. 5431

Further Processed Beef, Further Processed Pork, Eggs, Poultry: Ken Kotecki, Sr. Category Manager, (678) 356-5463

Dry Pasta, Non-Foods & Chemicals, Redistribution, Spices: Steve Moulthrop, Category Manager, (678) 356-5451

Appetizers, Frozen Fruits & Vegetables, Pickles, Produce, Seafood: Gabriel Tegenkamp, Category Manager, (678) 356-5432

Bakery, Beverages, Dairy, Dry Grocery, I.P.A.P.: Beth Hatter, Category Manager, (678) 356-5412

Bases, Canned Fruits & Vegetables, Dressings, Dry Commodities, Imports, Oils: David Sonnon, Category Manager, (678) 356-5436

Fresh Beef, Fresh Pork: Jan Langfeldt, Category Manager, (847) 924-0974

